



## PALACE HOUSE

National Heritage Centre for  
Horseracing & Sporting Art

NEWMARKET



© Lucy Clarke

# Conference & Events



© Lucy Clarke

—  
A beautiful setting in  
the heart of the Historic  
Home of Horseracing

Situated in a royal palace and stables, the National Heritage Centre at Palace House Newmarket offers an impressive venue for any event. From parties and launches to meetings and conferences we have an array of spaces to cater for event hire.

Conferences | Private Parties | Wedding Receptions | Meetings | Lectures | Workshops

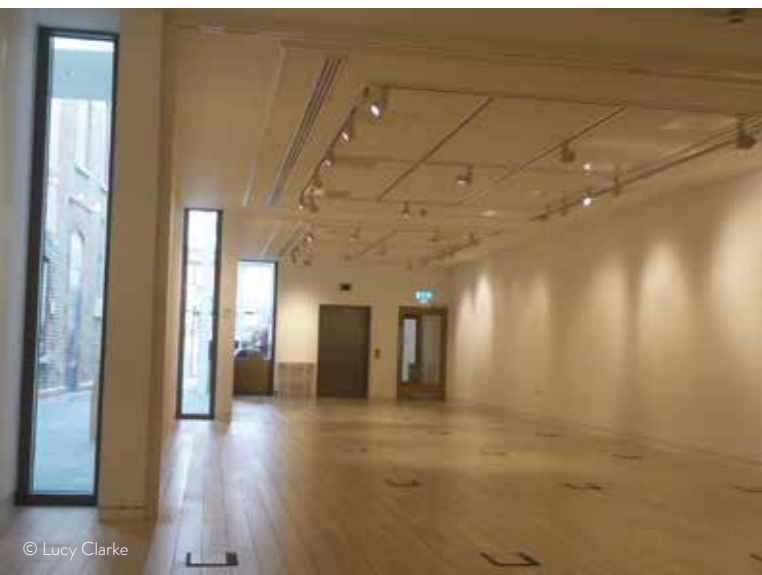
# Our Spaces



## The Rothschild Yard

A unique setting for our outdoor private parties. The Rothschild Yard was built in 1903 and has stabled numerous classic winning racehorses. Now home to the flagship yard of the Retraining of Racehorses charity with up to 8 racehorses here at any one time. Enjoy a garden party, corporate or private event or even your wedding reception in this historic horseracing courtyard. This beautiful space is sure to wow your guests.

**SPACE SUITABLE FOR:**  
100 guests seated  
150 guests standing



## Moller Gallery

A stunning state of the art gallery built in 2016 as part of our transformational, redevelopment project. This space offers a unique setting in the heart of the trainers house, lending itself perfectly for conferences, workshops, lectures and drinks parties.

**SPACE SUITABLE FOR:**  
80 guests seated conference style  
130 guests standing



## Packard Galleries Undercroft & Garden

Entertain guests in a space fit for a king in the remaining elements of the sporting palace built in 1671 for Charles II. The Undercroft is now the reception area for a gallery dedicated to British Sporting Art and can be complimented perfectly with access to the Palace Garden which is home to one of the famous sculptures 'Horse at Water' by Nic Fiddian Green. These spaces can be hired together and are perfect for garden parties, corporate or private events, after hours tours and talks.

**SPACE SUITABLE FOR:**  
40 guests seated  
60 guests standing

## The Mews

Originally built to stable horses belonging to the owners of Palace House, the Mews offers a beautiful space for conferences, private dining, workshops, lectures and exhibitions. Facilities include a private kitchen and toilets as well as a projector and speaker system.

**SPACE SUITABLE FOR:**  
70 seated guests on round tables  
90 seated guests conference style  
100 guests standing



## Alborada Education Centre

Two beautiful light and airy modern rooms are available to hire in our dedicated Education Centre. This space within the Trainers House, now the home to the collection of the National Horseracing Museum, has great step free access via a lift and self-contained toilets.

**SPACE SUITABLE FOR:**  
30 children seated



## The Boardroom

Situated in the extension built in 2016 of Trainer's House that houses the collection of the National Horseracing Museum is our boardroom. Specifically designed to host meetings conference calling and wi-fi, tea and coffee making facilities are available on request.

**SPACE SUITABLE FOR:**  
22 guests seated



## The Tack Room

We have a dedicated catering team who can provide anything from canapés and finger buffets, to formal dinners and will work with you to produce a bespoke menu to your needs. Special corporate rate admission tickets can be included within your package so you and your guests can enjoy the award winning National Heritage Centre to make the most out of your event.

Events can be held from 10am – 11pm subject to availability. For further details call 01638 666 390 or email [thetackroompalacehouse@gmail.com](mailto:thetackroompalacehouse@gmail.com)





## What we offer

Make your event special by including a tour around the National Heritage Centre. Here you will discover a museum, art gallery, live horses, special exhibitions, a restaurant and shop all under the one roof!

### National Horseracing Museum

Explore the latest audio visual and interactive technologies that chart the history of horseracing from its origins to the global industry it is today. From skeletons to the racehorse simulator there is something to entertain visitors of all ages.

### Fred Packard Galleries

Discover the finest gallery of British Sporting Art from 17th century to the present day, with artwork to capture any art lover's imagination.

### Rothschild Yard

Meet racing's equine heroes! For the first time former racehorses can be seen seven days a week with daily demonstrations at 11.30am and 2.30pm in the Peter O'Sullivan Arena. Special admission rates can be included in your package.

We can tailor packages to meet your requirements to ensure your event is a success. To discuss your requirements call **01638 667134** or email [reception@palacehousenewmarket.co.uk](mailto:reception@palacehousenewmarket.co.uk)

## How to find us

### By Car

For people travelling by car there are a number of car parks in Newmarket as shown on the map. The two closest to Palace House are Rous Road, CB8 8LX (short stay) and All Saints CB8 8ET (long stay) car parks. Please follow the parking signs and brown Museum signs when you reach Newmarket.

### By Train

When leaving the station follow the brown tourism signs which will guide directly to Palace House. The walk will take approximately 15 minutes.

### Accessible Parking

There is parking for Blue Badge holders at Palace House, please enter the site via the entrance at Vicarage Road.

For more information:

**T: 01638 667 314 E: [info@palacehousenewmarket.co.uk](mailto:info@palacehousenewmarket.co.uk)**

National Heritage Centre, Palace House, Palace Street, Newmarket, Suffolk, CB8 8EP

[palacehousenewmarket.co.uk](http://palacehousenewmarket.co.uk)



Follow us on   

Registered Charity Number 283656

Palace House has been kindly funded by:



Supported using public funding by  
**ARTS COUNCIL  
ENGLAND**

